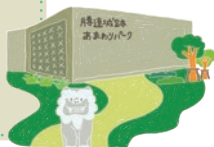


Learn more about Katsuren Castle Ruins Amawari Park Historical and Cultural Facility

This Amawari Park Historical and Cultural Facility opened in 2021 as a multi-purpose facility where you can learn about Katsuren Castle Ruins and Amawari. It's a fun and highly entertaining spot.



This is a place where you can learn the history and culture of Uruma City!

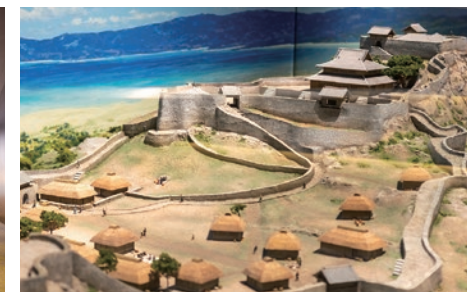
Amawari Park Historical and Cultural Facility was established in 2021 at the foot of the UNESCO World Heritage Site Katsuren Castle Ruins in order to get in touch with the history and culture of Uruma City, and also to look at the world heritage and the last lord of the castle, Amawari, from various perspectives.

Especially, the live performance theater is a must-see. You can enjoy video clips of Katsuren Castle Ruins or information on Amawari, and an energetic live

performance that tells the story of Amawari, the tenth lord of Katsuren Castle, on weekends and national holidays.

You can also learn the history of the Ryukyu Dynasty and the outline of the "Gusuku and Related Properties of the Kingdom of Ryukyu" from the permanent exhibition.

You can also get other services such as guided tours (reservation required) and Gojoin stamps (special stamps given to visitors as proof of their visit to places like castles and shrines).



You can learn more about Katsuren Castle Ruins and Amawari via entertaining exhibitions.

Stories related to Katsuren Castle

Kimutaka no Amawari

a modern version of *kumiodori*

Kimutaka no Amawari is a modern version of *kumiodori* (Okinawan traditional arts performance) that junior high and high school students of Uruma City participate in. It's an Okinawan musical that portrays the life of Amawari incorporating the traditional Okinawan *kumiodori* style, and modern dance and music.

Kimutaka is an old expression which means "content" or "noble," found in "Omorososhi," the oldest poem collection.



The story

It's a musical that depicts the life of Amawari, the last lord of Katsuren Castle. The story is set on the site of the castle ruins in the middle of the night. At school, rumor has it there is a legendary village festival.

In order to find the truth about this festival, students sneak into the castle. Suddenly, the God of Kimutaka appears in a thunder clap and hands over the scroll which tells the truth about "Amawari no Ran" [Revolt of Amawari]. What was Amawari like? As these noble students decipher the content of the scroll, they go back to the Katsuren of that time, and get closer to finding out the truth about the hero Amawari, which had been lost to history.

Amawari Park fees

Katsuren Castle Ruins <small>Including the permanent exhibition</small>	Adults <small>*high school students and older</small>	Individual	¥600
		Group discount <small>*20 or more people in a group</small>	¥480
	Children <small>*junior high school students and younger</small>	Individual	¥400
		Group discount <small>*20 or more people in a group</small>	¥320
Permanent exhibition	Adults <small>*high school students and older</small>		¥400
	Children <small>*junior high school students and younger</small>		¥200
Live performance show <small>*available on Saturdays, Sundays, and national holidays</small>	11:00 - 11:30 13:00 - 13:30 15:00 - 15:30		

Children younger than 6 get in free / elementary and junior high school students from Uruma City get free admission. Discounted fee for Okinawan residents: ¥400 / Child: ¥200

Amawari Park Historical and Cultural Facility

《Business hours》9 am – 6 pm
*tickets available until 30 minutes prior to closing time
《Open all year round》

*The facility may be closed temporarily for maintenance purposes.

